

INTER

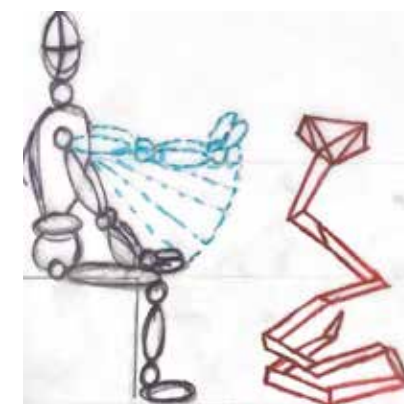
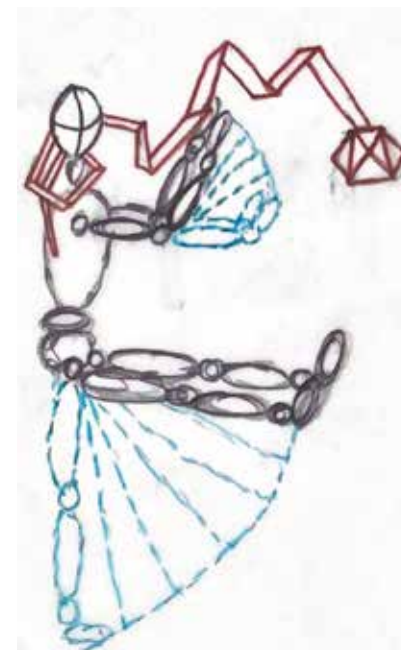
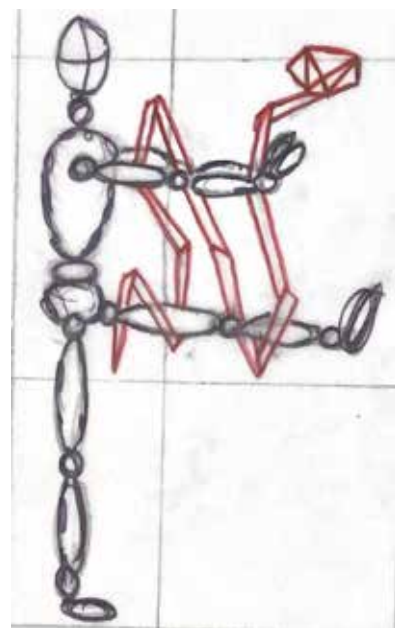
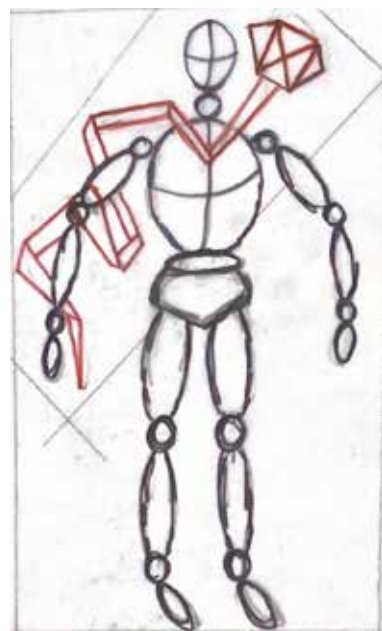
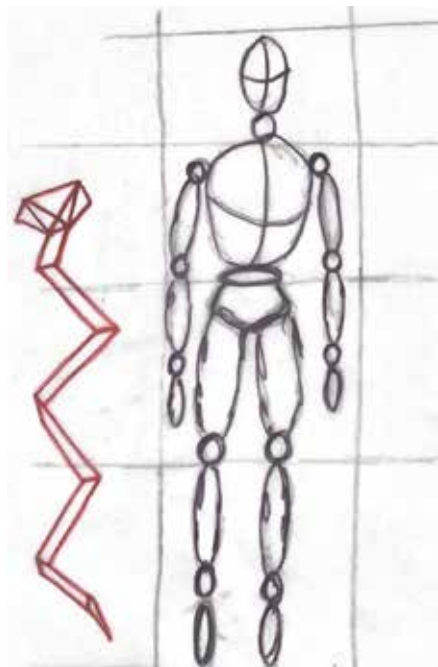
SCAPES

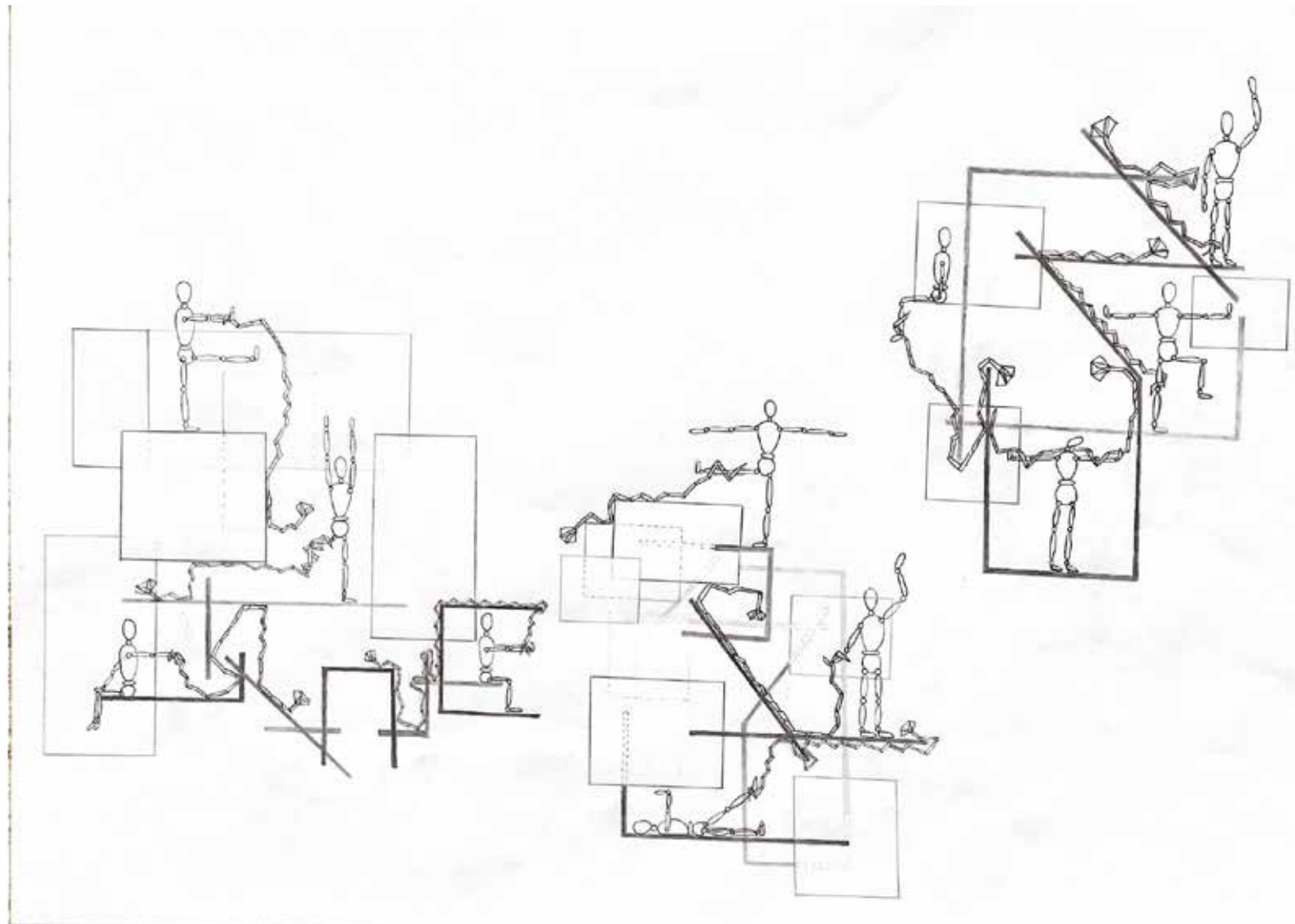
SPACES

PORTFOLIO

Burak Işılak

# MODULOR IN-ACTION-I

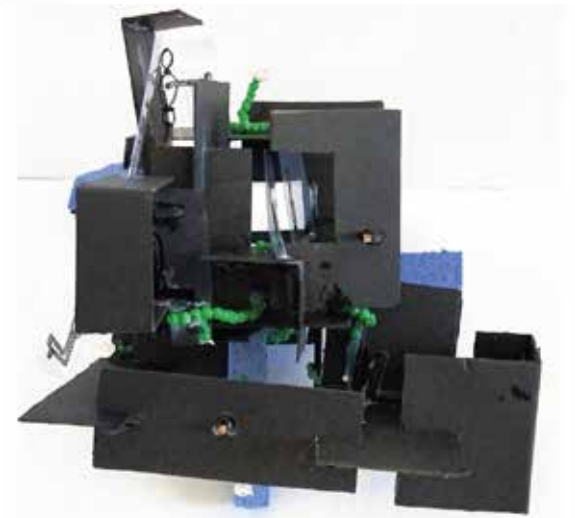
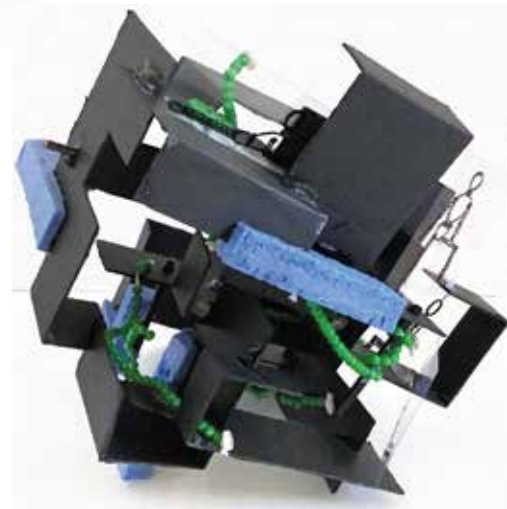
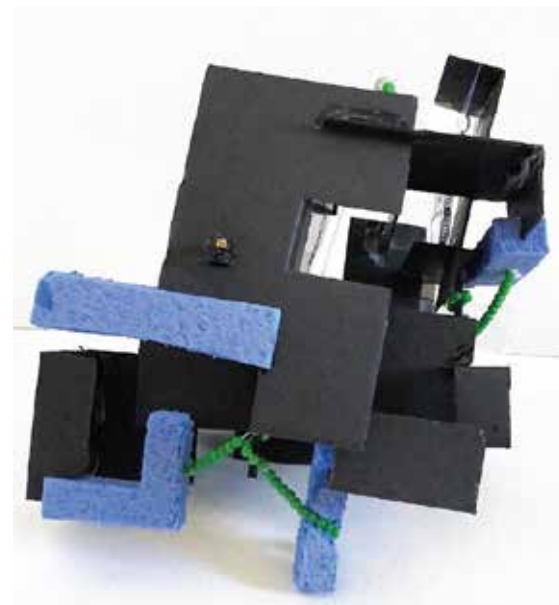
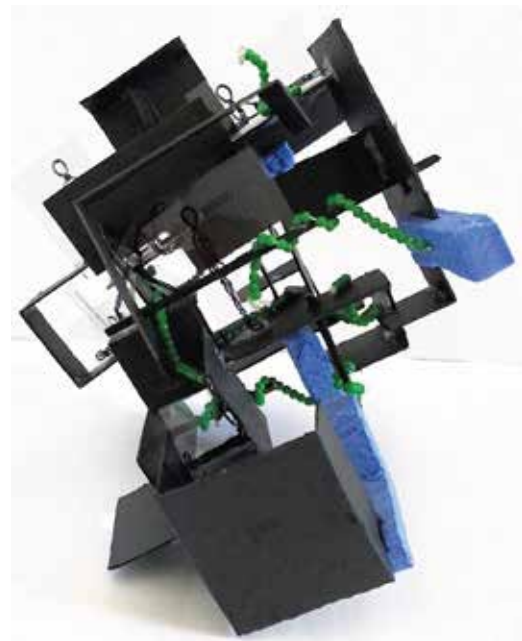
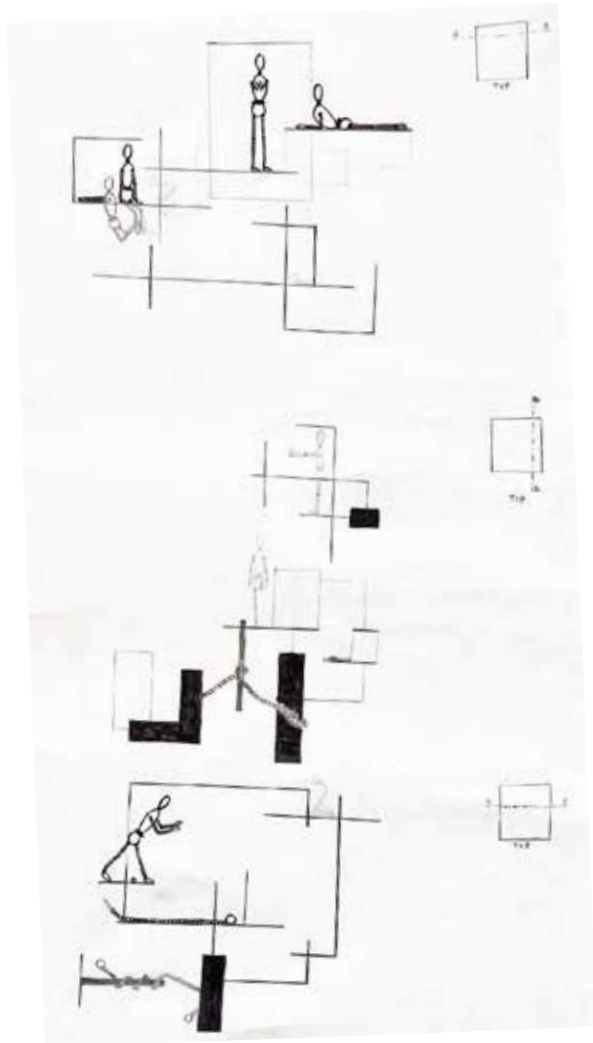




Adjusted and revised the sections to include body figures in the variety of postures that we studied on a consistent scale. Recalling the discussions on the spatial experiences in the drawings and diagrams, consider the number of bodies and postures in reference to

- different levels of enclosure
- definition, variation and control of spaces
- leveling of surfaces
- relations and interrelations of spaces

# MODULOR IN-ACTION-II



# IN-SITU MAPPING



#extracts  
#layers  
#borders

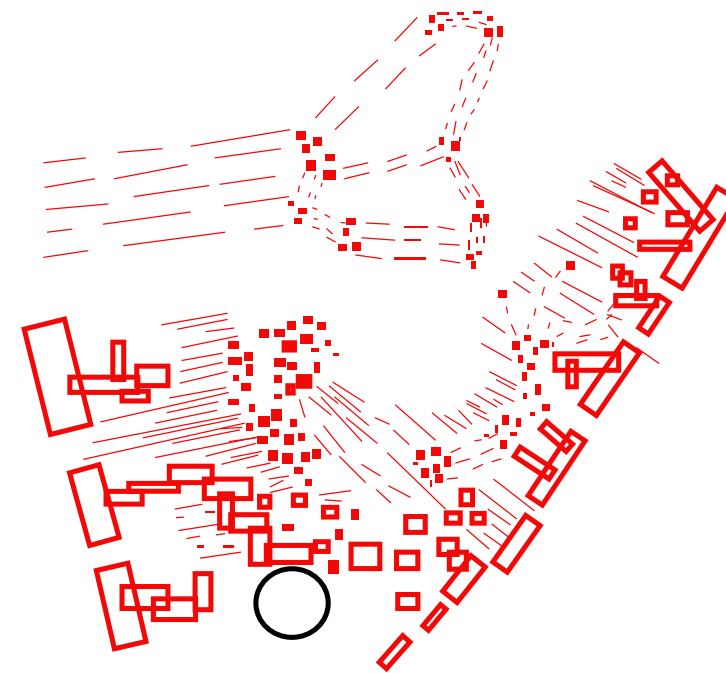
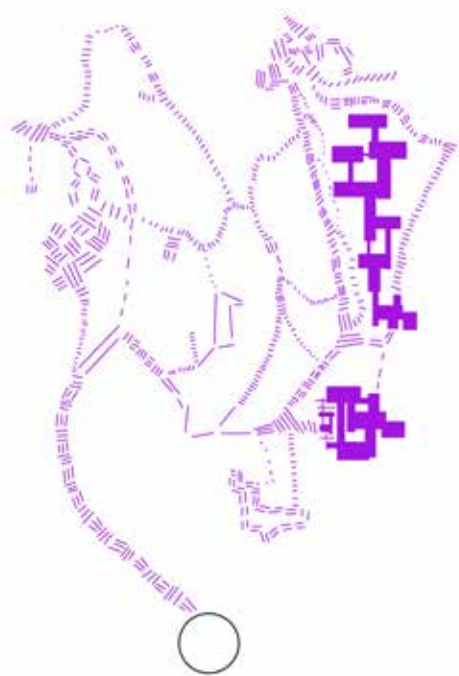


#objects  
#movement



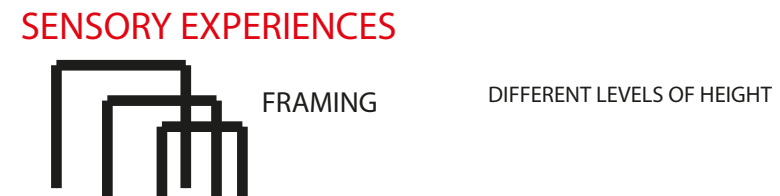
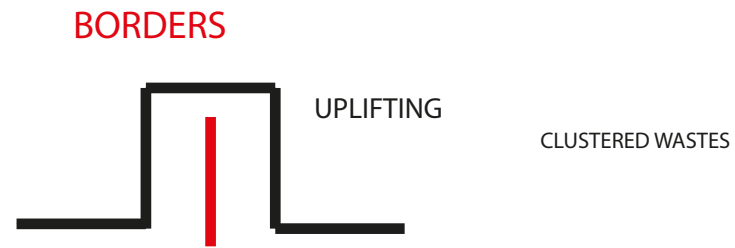
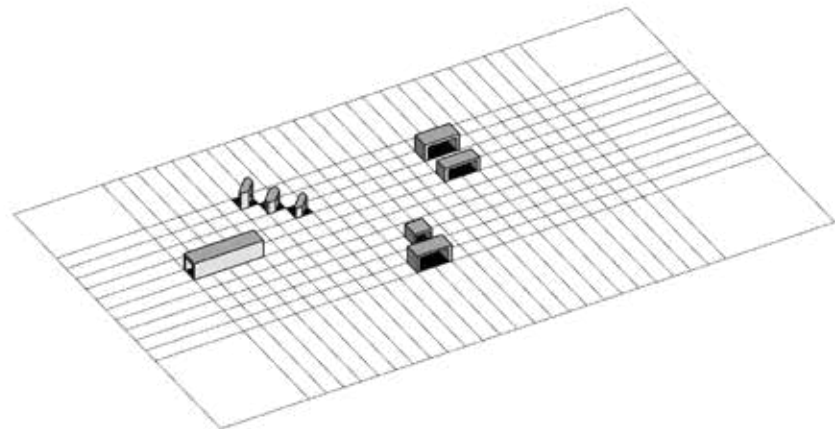
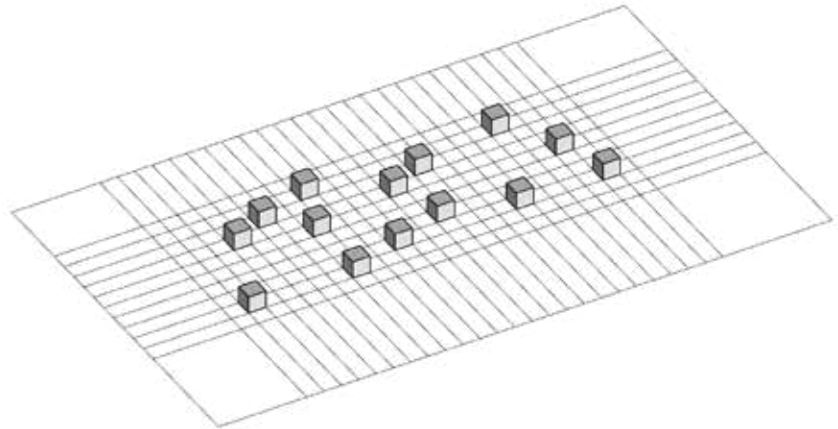
# FIELD AND SCAPES

## Field-I



# FIELD AND SCAPES

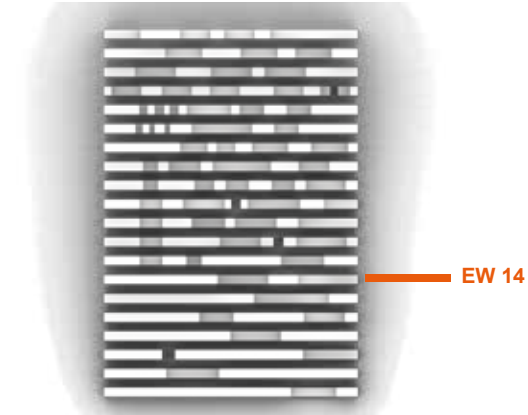
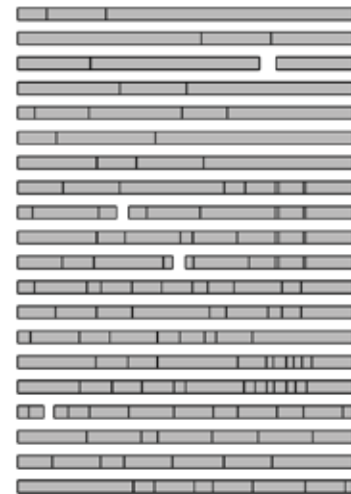
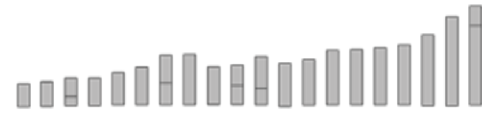
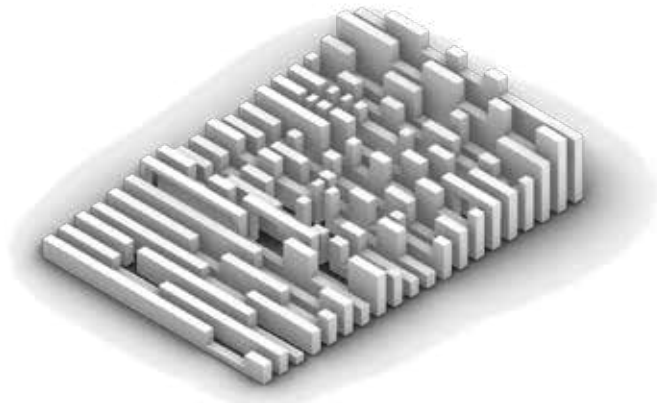
## Field-II / Projections



# FIELD - PROJECTIONS

## BORDERS

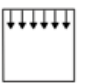
created by the clusters of waste and variations of levelling



UPLIFT



FRAMING

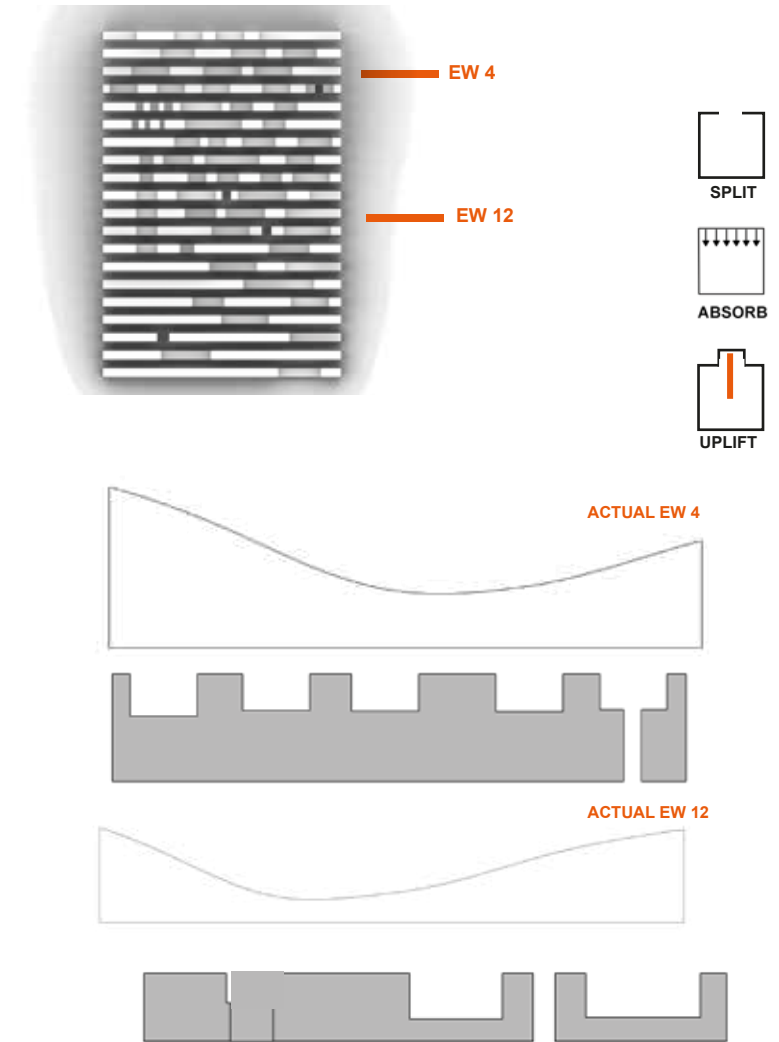
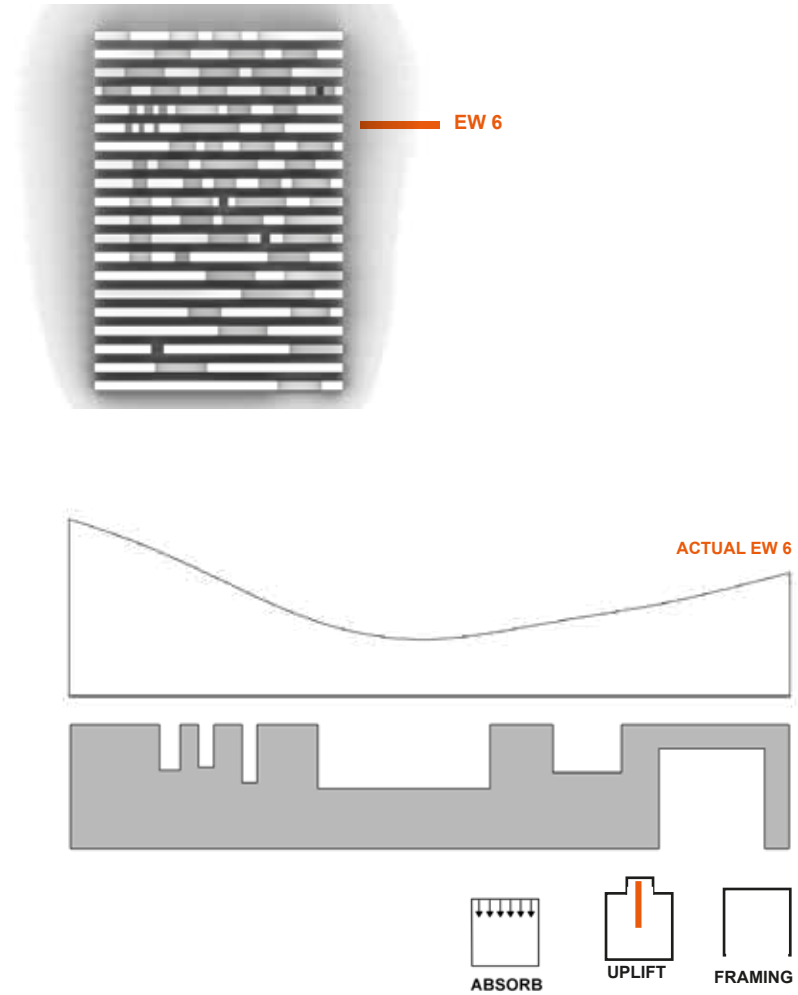


ABSORB



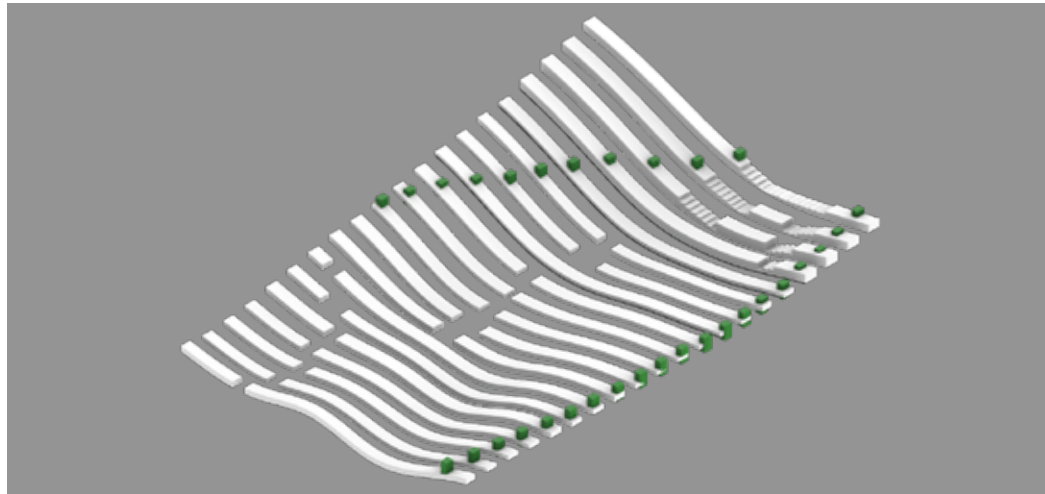


# FIELD - PROJECTIONS



# FIELD - PROJECTIONS/ revised

## BORDERS / Man made

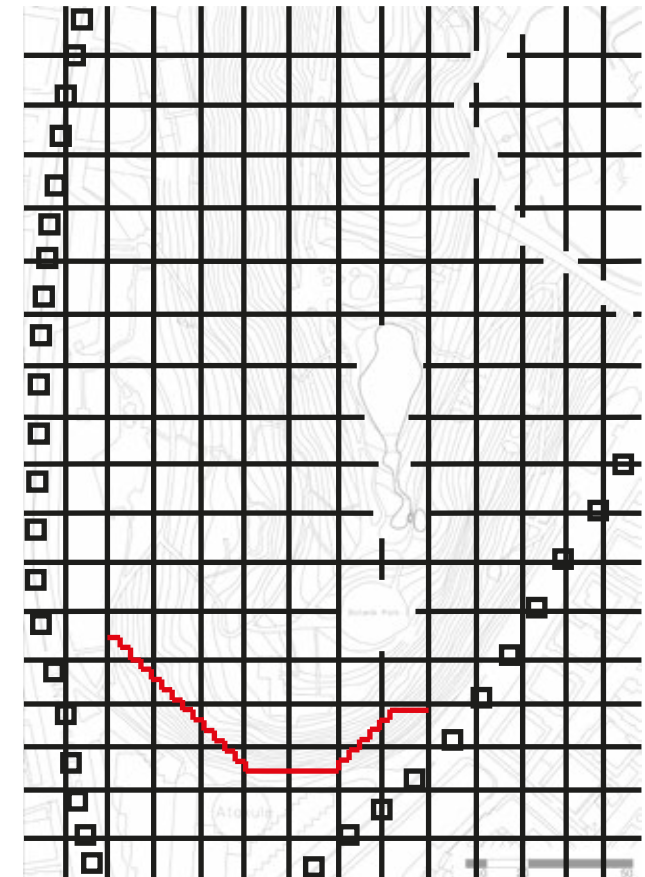


In this field, man made borders which are the extracts of layers of collected data. The way that operations are applied according to features of site.

**FRACTURE** was applied for closed, forbidden to enter or dangerous areas.(Botanical Garden, Pool and British Embassy)

**TERRACE** was used for the areas where are enveloped, encapsulated and bordered. (Atakule)

**INSERT** was used for the borders which are created by the streets of Botanik Park has. These are continuous but invisible through the surroundings of park as well as isolating the field from the outside of the park.



# FIELD - PROJECTIONS/ revised

